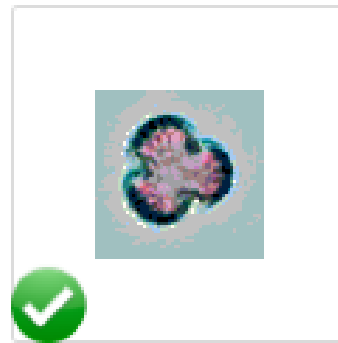


CoPol – the eSlide project



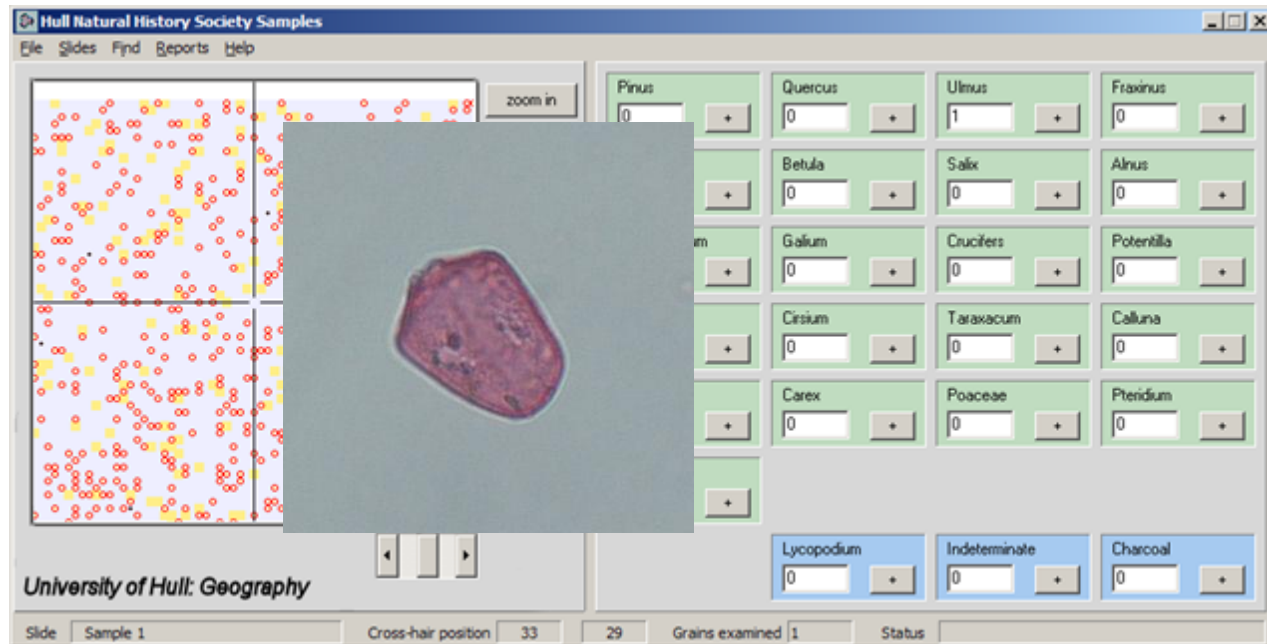
CoPol



EdPol

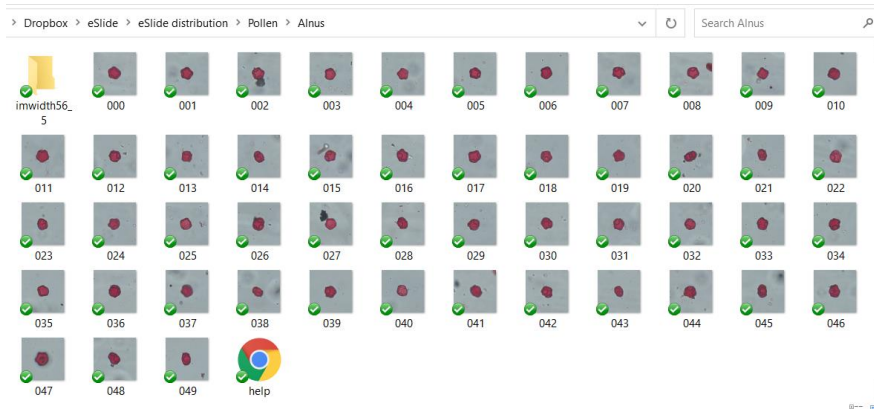
A microscope simulator

- Prepare students for microscopy practicals (learning basic identification skills)
- Replace microscope practicals where necessary
- Allow confident provision of training on proxies by non-expert academics (e.g. for general environmental archaeology courses)



Underlain by photograph sets

Comes with:
40 NW European pollen types
50 images of each



- Instructor specifies mix/%s on slides
- Grains randomly chosen from that distribution
- Random seed can be set so can reproduce a given slide
- Photos flipped/rotated to increase variety of views

Supporting student learning



Images ranked by
“difficulty level”



Instructor can set
slide difficulty to
build student
confidence

Corylus avellana-type

Pollen shown - *Corylus avelana*

Triplicate grain with simple pores, slightly flattened in equatorial view.
Psilate.
Easily confused with *Betula*.

Back

The Hull University Virtual Pollen Project, July 2009. Web contact r.middleton@hull.ac.uk

Help file

Feedback to students

Error report

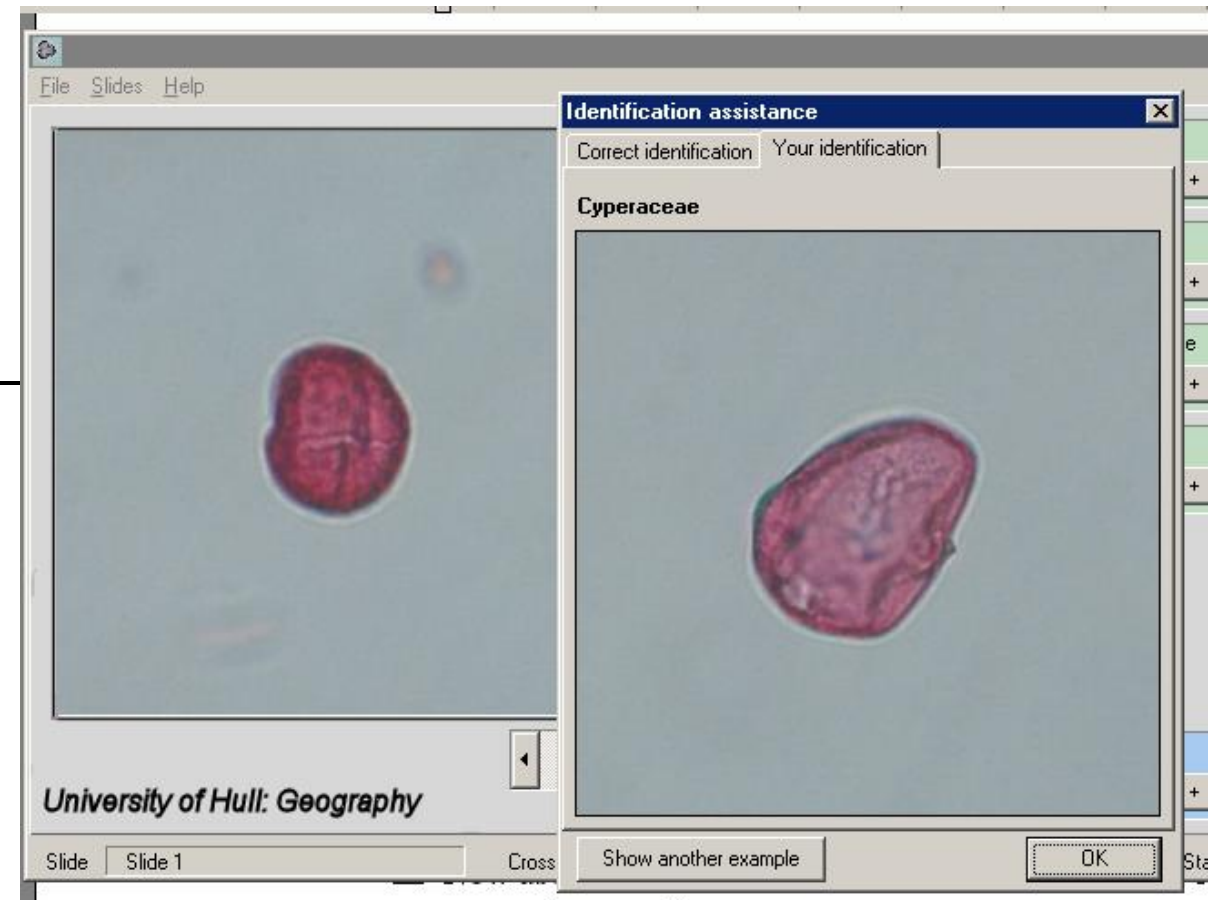
The total number of grains counted was 106.
Help was given with 1 of these determinations.

Assistance was needed with *Calluna vulgaris*

The number of mistakes made was 8, an error rate of 7.5%.

Quercus was mistaken for Cyperaceae
Betula was mistaken for *Corylus avellana*
Calluna vulgaris was mistaken for Cyperaceae 3 times
Chenopodiaceae was mistaken for *Plantago lanceolata*
Plantago lanceolata was mistaken for Poaceae
Poaceae was mistaken for *Triticum-type*

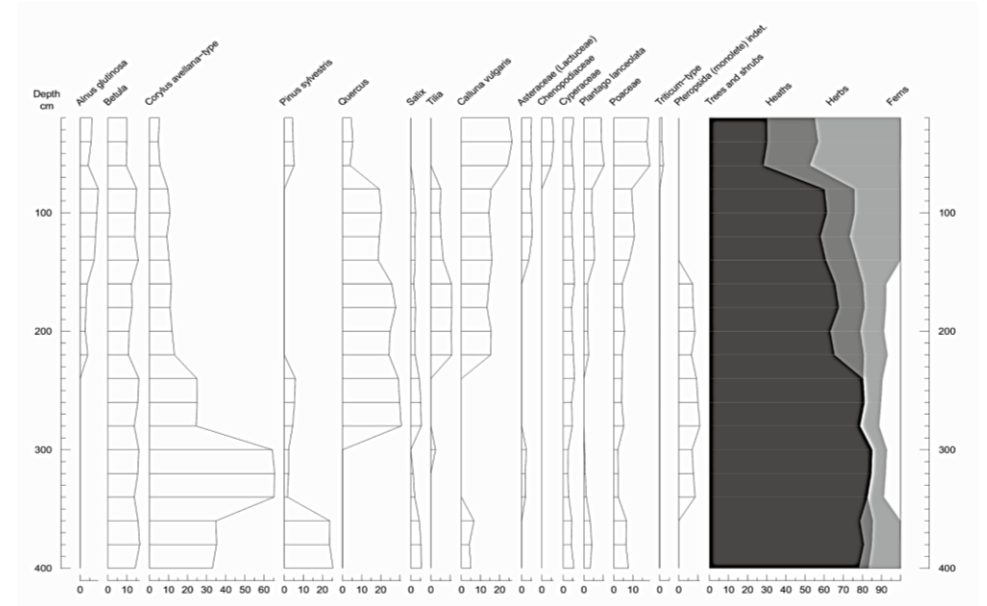
The counting tables still contain 2 mistaken determinations.



Comparison of pictures

Comes with three example practical files and handouts

- Making a basic key from type slides
- Counting an allocated slide to create a class pollen diagram (example is England Holocene)
- Exploring counting uncertainty



Adding taxa and proxies – can ViPs help?

- We just need **photo sets** to be able to set up for
 - Different regions
 - Different proxies
- And create customised practicals for your own module

The (pollen) images should be

square

for best performance, 320 x 320 pixels in size

The scale should be the same for all photographs in the sequence

**.jpg format*